

QuiX™ Startup Kit Quick Start Guide

Thank you for purchasing the QuiX Laser Scanner for your QNotes System. Since many of you will be replacing the older Videx credit card scanner with the QuiX Scanner, a short comparison is in order.

The QuiX Scanner is a laser scanner so it does not have to touch the chart or even “swipe” a barcode to work. **That’s right no more repetitive swiping!** This small difference is the main reason that you will be 25-35% more efficient when dictating. Also, the battery life is better. Even if the batteries do run out between charges, all your scanned data is automatically backed up so no data will be lost. This is a great improvement over the older scanner. The QuiX Scanner is a KDC scanner with Quick Notes software installed. These scanners must be purchased directly through Quick Notes Inc. or they will not work with the QNotes system. Please visit www.qnotes.com/quix for updates, pictures and videos (available soon).

Installing:

DO NOT PLUG IN THE SCANNER UNTIL YOU INSTALL IT. The QuiX Scanner’s software must first be installed before the scanner can be used. This means that the 2 driver files must be registered with your computer before you can use the new scanner. The provided install program on the CD should do this for you. After you first plug the scanner into a USB port on some versions of windows, you may be prompted to tell Windows where to look for the driver. This location would normally be “c:\qnotes”.

Note: On Windows Vista you may have to wait 30 seconds or longer for Vista to first check online for the driver. After that you will be able to click on <browse> and tell Windows where to look for the driver. Also depending on how your security is setup you may have to click <Install Anyway> or <Continue Anyway> on the windows screen that pops up to offer to install the driver. If the driver did not install then see manual driver installation later in this document.

Scanner Buttons and Screen:

There are three buttons on the scanner, 2 are on the left side and one large button on the front. The large main button and the top side button are for scanning. The lower button on the side is to open a menu where you can delete the last scan or perform other functions. The scanner’s bright LCD screen will provide you with information on what to do next or how many scans are stored and ready to be downloaded.

Scanning:

When scanning with QuiX you need to be about 1 to 1.5 inches away from the Zcode or chart code. The laser will present you with a line of light that needs to be a little bigger than the width of the code that you want to scan. One great feature is the **aiming tool**. While pointing the scanner at a barcode keep the scan button pressed then point to the barcode that you like to scan and then release the button. This way while you are learning, you will never scan the wrong code. When scanning through tape or a laminated wall charts, you may need to scan at a slight angle either from the left or right of the barcode to get it to scan perfectly (see image below). The scanner will learn from your unique scanning habits and just keep scanning the codes better and better over about 5 minutes of practice.

Downloading:

While you are using QuiX with Version 4 of QNotes you will have to click on setup and then “One Step Sync” on the QuiX tab. After we start to ship QNotes Office Version 5 or provide you an update you will just click on the same <ABC> button on the Qrunner taskbar as you did with the old Videx scanner. Everything else will work in the same way as it did before with the card scanner.

Revised: 03/26/2011

Charging is covered in the Q&A section below.

Revised: 03/26/2011

Questions and Answers:

Q: How long will the QuiX Scanner battery last before it needs to be replaced?

A: The battery on the QuiX Scanner can be charged at least 300 times before it needs to be replaced.

The QuiX Scanner comes with a rechargeable, Lithium-Polymer battery. The battery is recharged from any USB Port. Quick Notes recommends replacing the battery after a year or declining battery life is noticed. A poor battery will cause noticeable performance degradation in QUIX SCANNER.

Q: How long does it take to charge the QuiX Scanner?

A: It takes about 2 hours to fully charge the QuiX Scanner from an empty battery status to a fully charged status.

Q: How many barcodes can a fully charged QuiX Scanner scan?

A: The QuiX Scanner can scan more than 10,000 barcodes when fully charged. Using a Bluetooth model, it can scan more than 7,500 barcodes.

Q: How long will the QuiX Scanner battery lasts in the sleep mode?

A: The QuiX Scanner lasts more than two weeks in sleep mode. If *Bluetooth* is powered ON and connected to a host device, it will last for more than two days.

Q: How many barcodes can be stored in the QuiX Scanner?

A: The QuiX Scanner has 100KB for database memory and 80KB of data memory. The user can store over 10,000 barcodes (200 patients) in memory. When the data buffer is full, the scanner displays a message, **Buffer Full**, ignoring any command to scan barcodes. You must download the scanner to continue data collection.

Q: What is the difference between the QuiX 100 and the QuiX 200?

A: The 100 has a flip out USB port and the 200 uses a mini USB cable. The QuiX 200 has Bluetooth can download wirelessly but still needs the cable to charge. We plan to offer a **Real Time Productivity Kit** for billing and EMR that will require the QuiX 200 to enable data and charges to be sent to the front desk. There will be a trade in offered at that time.

How To Scan: Here are a few simple tips for easy scanning. 1) Point the laser at the sample Zcode and use the laser light to connect the dots. 2) Let go of the button. You should be holding the QuiX at about 2 inches from the barcode. Now, try to scan the sample chart code and then Accept Code.



QuiX Special Codes (will be added to future chart):

Battery Check



Memory Status



Scanner Version

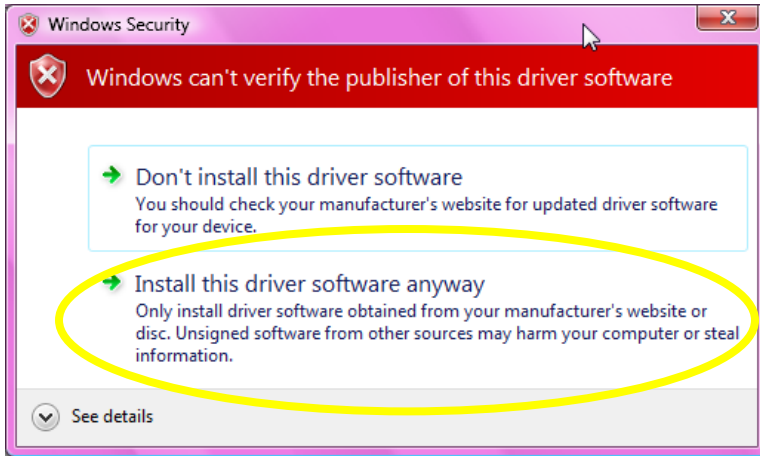


More special programming codes are included in the trouble shooting section later in the document.

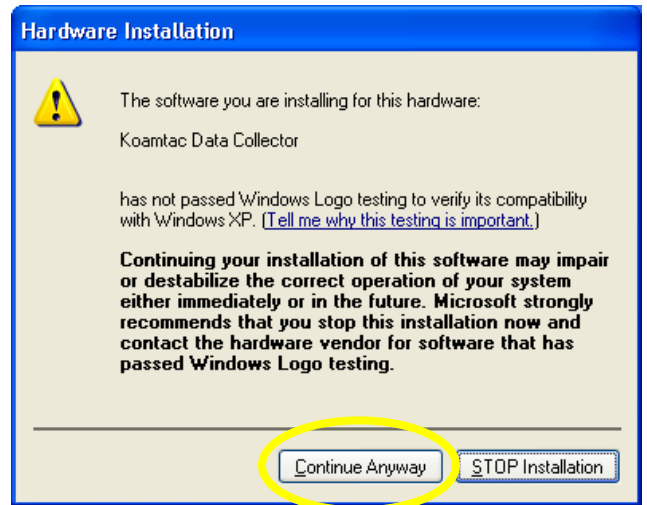
Revised: 03/26/2011

Manual driver installation:

The driver for the scanner is actually built in to windows. We provide an information file, called an "inf" file that can be right clicked to tell windows about your new scanner. Depending on security settings, Vista and Windows 7 might require you to plug in the scanner **after you run the install program** and then browse to the inf file located in the QNotes folder and on the CD and continue with one of the below 2 screens. When you see one of these screens choose to "Install this driver" or "Continue Anyway".



(Vista and Windows 7)

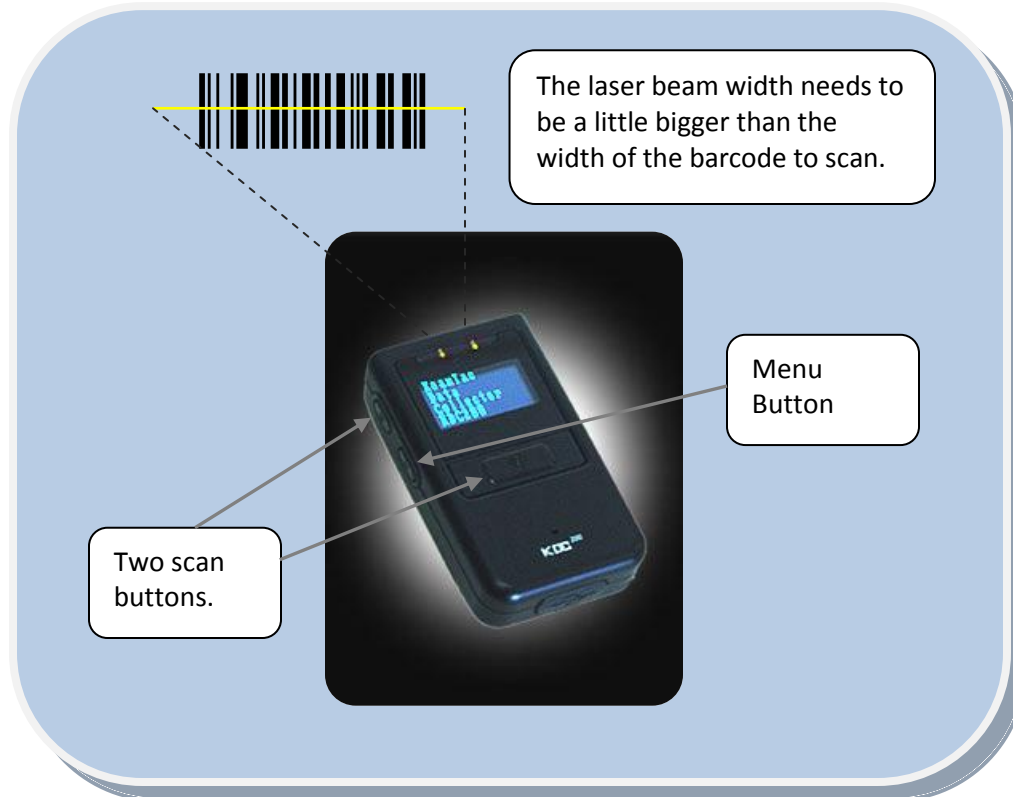


(Windows XP)

Scanning Barcodes:

Correct method to scan a barcode. You might find that when scanning through a laminated chart printed with color that a slight angle will work better. This is dependent to the type of lighting in the room.

Here is a great tip: While learning press and hold the scan button to activate the **aiming feature**, when you are pointing to the correct Qcode barcode then release the button. It is as easy as using a laser pointer.



Revised: 03/26/2011

Trouble shooting section (provided by the manufacture):

Can't communicate with PC USB cable is not connected properly
Check cable connection between KDC and host device
Software or Driver is not working properly: Reload the software or install the driver
COM configuration: Check COM port configurations

LED blinks yellow Low battery power
Charge the battery by connecting KDC to PC.
KDC may lose collected data if the battery is empty for an extended amount time.

Buffer Full Message Full Memory
Clear the Memory using Synchronization program

Bluetooth Message keeps popping up
Scan the two Bluetooth code below and try to keep the scanner charged.

To reset the KDC, follow these steps.

The KDC stores collected data into flash memory and will not lose data or the KDC settings during the reset process.

1. Connect the KDC to your PC.
KDC100 - Connect to your PC directly using the swing out, Type A USB connector.
KDC200 - Connect to your PC using the included cable, attaching the ultra mini USB connector to your KDC and the standard, Type A connector to your PC's USB port.
2. Press DOWN scroll button and SCAN button simultaneously for 5 seconds.
3. When the LEDs illuminate yellow, release the buttons.
4. The KDC initial screen, displays when reset is complete.

Programming Codes:

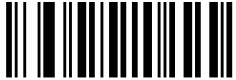
Wide Scan Angle (Default & Recommended)
Less than one inch away



Narrow Scan Angle (Small Laser – Not Recommended)
Two to three inches away



Enable Short Codes



Auto Menu Exit



Bluetooth Off (A)



Bluetooth Off (B)



**** Scan these 4 codes if the battery run down and you have not received your QuiX update ****

Quick Notes Inc. reserves the right to make changes to any product to improve reliability, function, or design. Quick Notes Inc. doesn't assume any product liability arising out of, or in connection with, the application or use of any product, circuit, or application described herein. Follow all warnings and instructions marked on manual and units. Use only the power source specified in this manual or marked on the units.

TO PREVENT FIRE OR SHOCK HAZARD, DO NOT EXPOSE THIS UNIT TO ANY TYPE OF MOISTURE. DO NOT LOOK DIRECTLY INTO LASER OR POINT THE LASER INTO ANOTHER PERSON'S EYES. EXPOSURE TO THE BEAM MAY CAUSE EYE DAMAGE.



CAUTION:

Changes or modifications not expressly approved by the manufacturer responsible for compliance could void the user's authority to operate the equipment.

WARNING:

Extra **Accept** codes for compatibility with older charts and books.



Accept



Accept

Revised: 03/26/2011

This device complies with part 15 of the FCC Rules. Operation is subject to the following two conditions: (1) This device may not cause harmful interference, and (2) this device must accept any interference received, including interference that may cause undesired operation.